

IDEAS FOR A CLEAN ENVIRONMENT

UNDERGROUND CONTAINER COLLECTION SYSTEMS



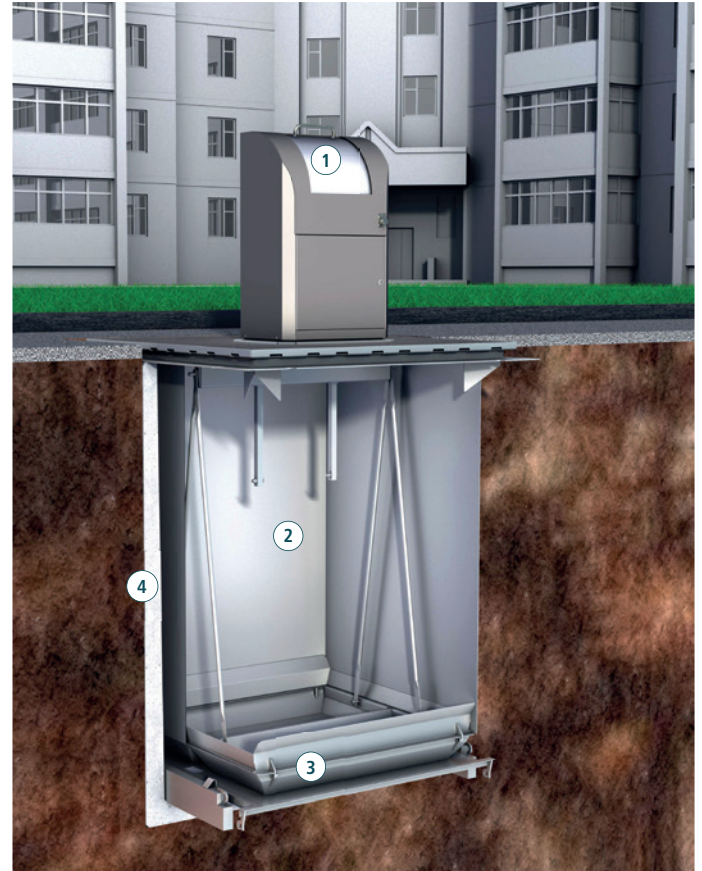
H&G UNDERGROUND CONTAINER COLLECTION SYSTEMS

THE FUTURE OF WASTE DISPOSAL

The underground container collection system EUROPA from H&G shows what modern waste disposal in public places and the housing industry can be like. The collection containers disappear completely under the ground, leaving only the small, rather unobtrusive infeed columns visible on the surface: this is H&G's solution to problems typically linked with public waste collection points above-ground for waste and recyclable materials. The underground container collection system EUROPA makes public places as well as the living environment tidier and more attractive, improving the quality of homes and lives. The underground installation and the low access height provide an easy handling and accessibility and are thus perfect for elderly people, children and wheelchair users.

YOUR BENEFITS WITH H&G UNDERGROUND CONTAINER COLLECTION SYSTEMS

- barrier-free access
- easy to use
- low access height
- clean waste collection points
- no obstructed view
- less space requirements
- reduced nuisance
- long lifespan



1. infeed column
2. collection container
3. security platform
4. foundation container

PUBLIC SECTOR

infeed column EUROPA 13 with rosette

fraction: glass and cans



infeed column EUROPA 13 with flap

fraction: paper and lightweight packaging



infeed column GRUMBACH with rosette

fraction: glass and cans



infeed column GRUMBACH with flap

fraction: paper and lightweight packaging



infeed column EUROPA-round

fraction: glass and cans



HOUSING INDUSTRY

infeed column EUROPlus with chute

volume: 20 – 80 l

fraction: residual waste, organic waste,
lightweight packaging



infeed column EUROPlus with drum

volume: 30 – 120 l

fraction: residual waste, organic waste,
lightweight packaging



infeed column EUROPlus with flap

fraction: paper and cardboards



infeed column EUROPlus with rosette

fraction: glass and cans



infeed column EUROPA-round with lid

fraction: residual waste



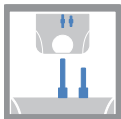
EASY DISPOSAL LOGISTICS

The disposal of all H&G EUROPA-models can be realized optionally with all common lifting systems and done practically by one-hand operation.

KINSHOFER
MUSHROOM



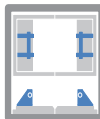
2-HOOK



3-HOOK



GRUMBACH



ACCESS CONTROL

The access to the infeed column can be limited only to authorized users – optionally by means of a conventional profile cylinder or an up-to-date electronic ID-system.



COLLECTION CONTAINER WITH BOTTOM-FLAPS

VOLUME



COLLECTION CONTAINER - 100% LIQUID-TIGHT

VOLUME



- the liquid-tight collection container prevents the leakage of remaining liquids and solids
- thus no contamination within the foundation container or on sidewalks
- reducing of follow-up costs
- suitable for all lifting systems: Kinshofer mushroom system, 2-hook or 3-hook system
- usable for all kinds of waste and recyclables

COLLECTION CONTAINER GRUMBACH

VOLUME



WALKING PLATFORM FOR THE COLLECTION CONTAINERS

The surface of the collection containers is at the same time the pavement and can be perfectly adjusted to the surrounding environment by means of:

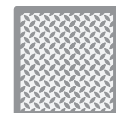
EPDM



PAVING



BULB PLATE



CONCRETE FOUNDATION CONTAINER

The H&G concrete foundation containers are being cast monolithically according to DIN 1045; C35/45 and are standardly designed for the traffic load SLW 30. H&G offers the concrete foundation container with different volumes and dimensions and by default 1,95 m x 1,95 m and 1,85 m x 1,85 m. The installation height depends on the volume of the container.

VOLUME



CITY

The H&G underground container collection system CITY is appropriate for public places where amounts of waste need to be removed daily- fast, cleanly and economically. With the CITY system, almost the complete part of the waste collection system is installed underground; only the aesthetically designed infeed column remains above ground, which adapts itself harmonically to any environment. The emptying of the CITY system functions fast and without any problems- the waste is being suctioned through a separate shaft.

650 LITER



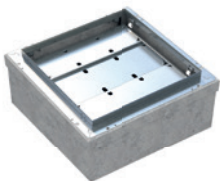
1.000 LITER



1.300 LITER



SECURITY PLATFORM



During the emptying process of the collection container, the foundation container must be closed completely. The security platform runs up automatically by means of counter weights and closes the surface safely. The security platform is, according to DIN EN 13071, bearable up to a load-capacity of 150 kg.

UFA - TIDY. CLEAN. INVISIBLE.



UFA, the underground container lifting system, is a variable system which ensures cleanliness and tidiness. Also with that system, the 240, 660 or 1.100 l waste collection bins disappear easily underground and with them unaesthetic waste collection points. Electro-hydraulically powered, the bins can be raised and lowered quickly and reliably.





more information
HG-SYSTEMS.COM





H&G Entsorgungssysteme GmbH
Lützelner Straße 46 • D-57299 Burbach
Phone: +49 (0) 2736 / 50 96 - 0
Fax: +49 (0) 2736 / 50 96 - 140
info@hg-systems.com
hg-systems.com